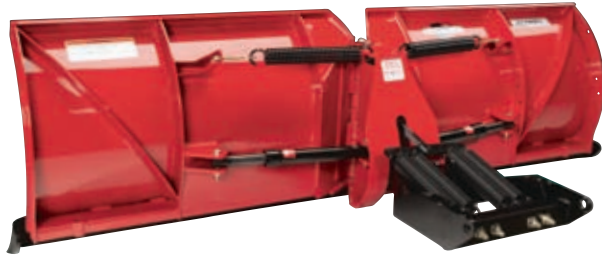


PROFESSIONAL-USE PLOWS **POWER-V**

VEHICLE APPLICATION: 4X4 ½ TO 1-TON TRUCKS AND SUVs

Steel
• 7'6"
• 8'2"
• 9'2"



| SPECIFICATIONS | 7'6" | 8'2" | 9'2"*** |
|---------------------------------|--------------------------------------|--------------------------------------|--------------------------------------|
| Blade Width (Straight) | 90" (229 cm) | 98" (249 cm) | 110" (279 cm) |
| Plowing Width (V) | 81" (206 cm) | 88" (224 cm) | 99" (252 cm) |
| Plowing Width (Scoop) | 74" (188 cm) | 81" (206 cm) | 92" (234 cm) |
| Plowing Width @ 30° Angle | 77" (196 cm) | 85" (216 cm) | 95" (241 cm) |
| Blade Height | 30" (76 cm) | 30" (76 cm) | 30" (76 cm) |
| Blade Thickness | 14-ga high-strength steel | 11-ga steel | 11-ga steel |
| Cutting Edge (high-performance) | ½" x 6" (1.3 cm x 15 cm) | ½" x 6" (1.3 cm x 15 cm) | ½" x 6" (1.3 cm x 15 cm) |
| Reinforcement Ribs | 6 vertical, 2 diagonal | 6 vertical, 2 diagonal | 8 vertical, 2 diagonal |
| Plow Shoes | Optional | Optional | Optional |
| Trip Springs | 4 | 4 | 4 |
| Angle Cylinders | 1½" x 10" (4 cm x 25 cm) | 1½" x 10" (4 cm x 25 cm) | 1½" x 10" (4 cm x 25 cm) |
| Lift Cylinder | 2" x 1½" x 10" (5 cm x 3 cm x 25 cm) | 2" x 1½" x 10" (5 cm x 3 cm x 25 cm) | 2" x 1½" x 10" (5 cm x 3 cm x 25 cm) |
| Attachment System | SmartHitch 2 | SmartHitch 2 | SmartHitch 2 |
| Plow Weight* | 700 lb ^B (318 kg) | 770 lb ^B (349 kg) | 838 lb ^B (380 kg) |
| Plow Lights | SmartLight 2 | SmartLight 2 | SmartLight 2 |

*Plow weight does not include vehicle mount weight. ^BVehicle mount weight range: 75–105 lb (34–48 kg). **Includes 1-ton trucks with dual rear wheels.

TWO-YEAR LIMITED WARRANTY

ALL BOSS SNOWPLOWS AND EQUIPMENT ARE GUARANTEED TO BE FREE FROM DEFECTS IN MATERIAL AND WORKMANSHIP FOR TWO FULL YEARS FROM THE DATE OF PURCHASE. STOP BY ANY AUTHORIZED BOSS DEALER TO RECEIVE COMPLETE DETAILS ON OUR TWO-YEAR PARTS AND LABOR WARRANTY.

LEGAL STATEMENT

VEHICLES INTENDED TO BE EQUIPPED WITH A SPREADER AND/OR SNOWPLOW MUST COMPLY WITH THE VEHICLE MANUFACTURERS' SPECIFICATIONS FOR EQUIPMENT APPLICATION. BOSS PRODUCTS/NORTHERN STAR INDUSTRIES, INC. RESERVES THE RIGHT UNDER ITS PRODUCT IMPROVEMENT POLICY TO CHANGE CONSTRUCTION OR DESIGN DETAILS AND FURNISH EQUIPMENT WHEN SO ALTERED WITHOUT REFERENCE TO ILLUSTRATIONS OR SPECIFICATIONS USED HEREIN.



BOSS SNOWPLOW PRODUCTS ARE DESIGNED AND MANUFACTURED IN AN APPROVED ISO 9001:2000 REGISTERED FACILITY.

BOSS PRODUCTS ARE COVERED UNDER ONE OR MORE OF THE FOLLOWING PATENT NUMBERS: U.S. PATENTS: 4,074,448; 4,658,519; 5,568,694; 6,170,178; 6,134,814; 6,108,946; 6,467,199; 7,437,839. CANADIAN PATENTS: 1,300,877; 2,330,135. OTHER PATENTS PENDING.
©2009 BOSS PRODUCTS/NORTHERN STAR INDUSTRIES, INC. ALL RIGHTS RESERVED. PRINTED IN U.S.A.



PUSHING THE EDGE

FOR MORE INFORMATION OR
THE BOSS DEALER NEAREST YOU,
CALL 800-286-4155 OR VISIT BOSSPLOW.COM